

First-time buyers could live at Burlington Place for just £451 per month

Many might believe that they can't afford to buy their first home, but if they knew that all it would cost is £451*, in monthly repayments, they may think twice. If house-hunters visit Burlington Place, Peveril Homes' development in Sherwood, they can find out more about the three-bedroom Ashby, priced at £149,950, and how they can take that first step on the property ladder, with the help of FirstBuy*.

With this incentive, purchasers are required to raise just 80 per cent of the price of the home, made up by a five-per-cent deposit and a 75-per-cent loan-to-value mortgage. The remaining 20 per cent is provided by the government and Peveril Homes as an equity

loan, which is interest free for the first five years. To qualify, you have to be a first-time buyer and, as a household, earn less than £60,000 a year – it's as simple as that.

Visitors to Burlington Place will be able to take a look around the semi-detached Ashby and will find a convenient cloakroom, spacious living room and an open-plan kitchen and dining room – perfect for entertaining – on the ground floor. Upstairs is the family bathroom, along with three well-proportioned bedrooms. The property even comes with a garage.

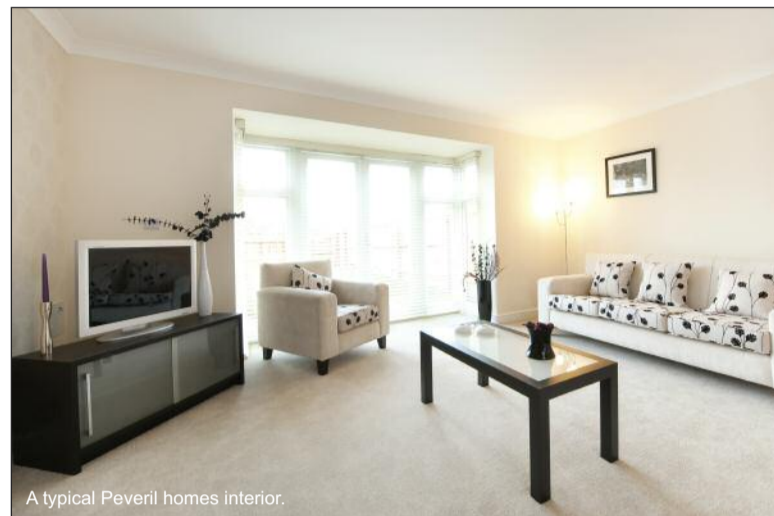
Angela Thomas, sales and marketing manager at Peveril Homes, comments: "The Ashby, at our development in Sherwood, is priced from £149,950. This may seem out of reach to some first-time buyers,

but looking at the monthly repayments, of £451, allows purchasers to get a realistic picture and understand that buying at Burlington Place is an affordable option."

Only a few homes remain

The development also features a selection of alternative three- and four-bedroom homes, priced from £144,950. However, thanks to a recent flurry of sales, there are now just a handful of properties remaining so, if you're in the market for a new home, you'd be well advised to act fast and visit the site.

Lying just three miles from Nottingham city centre, this exclusive development is ideally placed to make the most of what the city has to offer. If you want



A typical Peveril homes interior.

to keep things closer to home, though, Sherwood, itself, has a selection of shops and eateries for you to try at your leisure. In addition to this, any families will benefit from a variety of good schools, both state and independent. Meanwhile, access to the M1 is excellent, making Sherwood a popular base for those looking to commute.

Why wait...

To find out more about these final few properties in Sherwood, visit the view home, open Saturday and Sunday, 11am–5pm. Alternatively, contact us: 0115 960 2475 or go to www.peverilhomes.co.uk. Outside of these hours, contact the head-office sales department: 01773 880550.

Sherwood

Why rent when you can buy?



Live here for only **£451 per month!***

The Ashby 3 bedroom home with garage

WORKED EXAMPLE BASED ON A £149,950 PURCHASE PRICE:

You arrange mortgage	(75%)	£112,460
Deposit	(5%)	£7,500
We arrange equity loan	(20%)	£29,990
Total purchase price		£149,950

Visit the sales centre Saturday–Sunday, 11am–5pm
Call 0115 960 2475 **Click** www.peverilhomes.co.uk/sherwood
 Outside of these hours contact the head office on 01773 880550

Peveril
homes to build a life in

Burlington Place,
off Hucknall Road, Nottingham, NG5 1RB



Image depicts typical Peveril Homes street scene and is not representative of any property offered for sale. Furniture shown is not included. *Available on selected plots only. Subject to FirstBuy terms and conditions. FirstBuy cannot be used in conjunction with any other offer. Mortgage application will be subject to status. Offer subject to using nominated independent mortgage adviser and solicitor. YOUR HOME MAY BE REPOSESSED IF YOU DO NOT KEEP UP REPAYMENTS ON YOUR MORTGAGE AND/OR EQUITY LOAN.